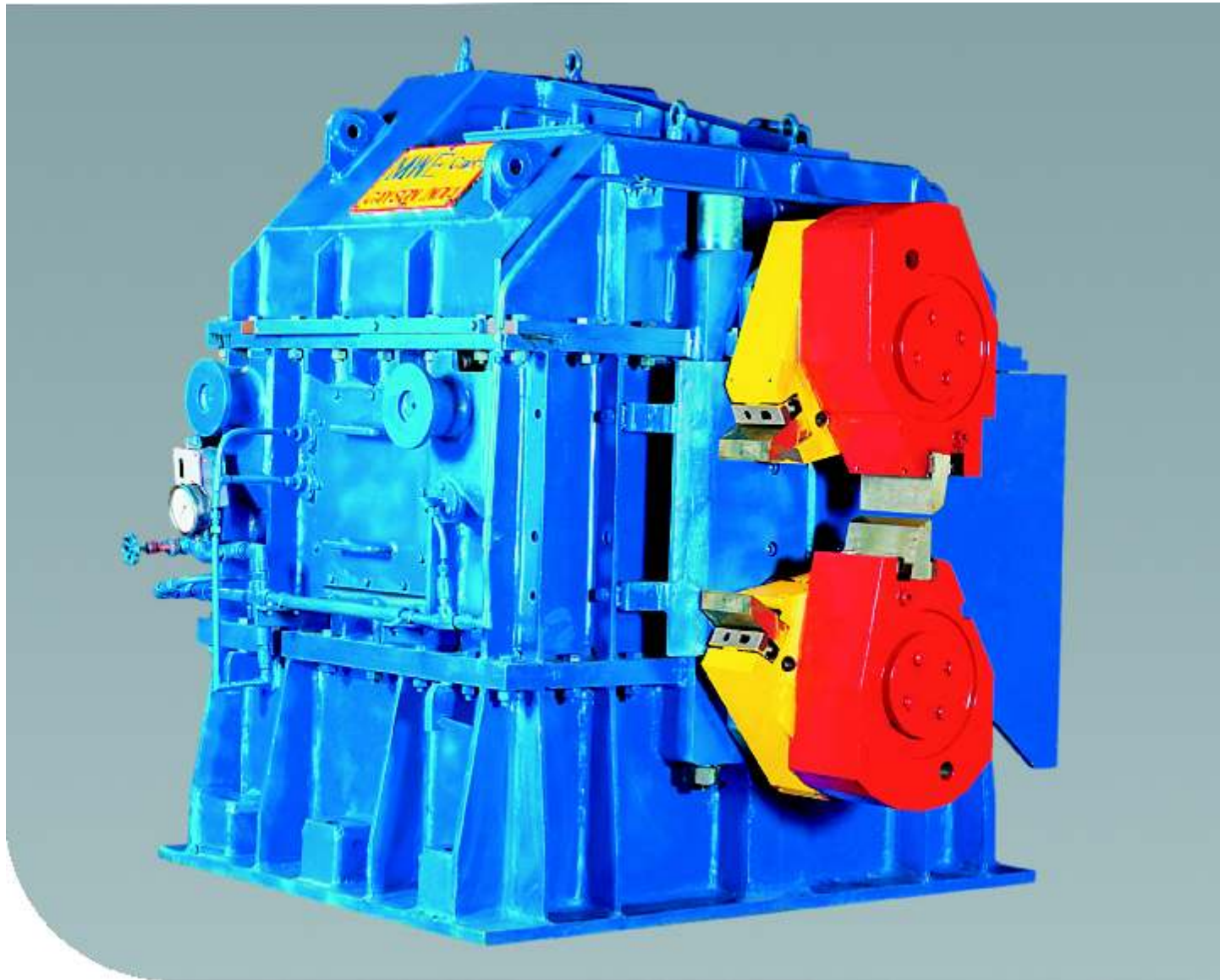


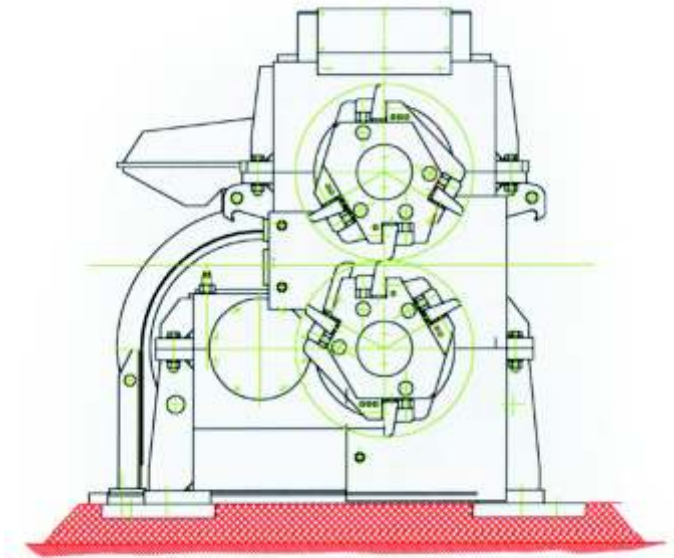
Crank Shears

Project Engineering • Supply • Services



Crank Shears

- The design of knife carrier will be adopted to the required application, e.g.:
 - One knife track, one knife: cropping, dividing (e.g. cooling bed lengths)
 - Low temperature rolling
 - One knife track, two knives: cropping; emergency cutting
 - One knife track, various knives short emergency lengths
 - Two knife tracks, with additional switch:
 - 1st track one knife: cropping, dividing
 - 2nd track various knives: short emergency lengths



- Shear start is initiated by pulse generator (billet head end)
- Cut according to chosen crop length
- After cutting, the shear is stopped again
- Crop end diverted into scrap disposal system

| Type | KS200 | KS315 | KS355 | KS355 | KS400 | KS400 | KS560 |
|----------------------|-------|----------|---------|---------|--------|-------|--------|
| No. of Knife track | 2 | 1 | 2 | 1 | 1 | 2 | 1 |
| Cutting Force (kN) | 200 | 315 | 360 | 360 | 400 | 400 | 580 |
| Material Speed (m/s) | 2-5 | 1.9-13.3 | 1.4-7.2 | 0.5-2.8 | 1.6-16 | 1.4-5 | 0.7-11 |